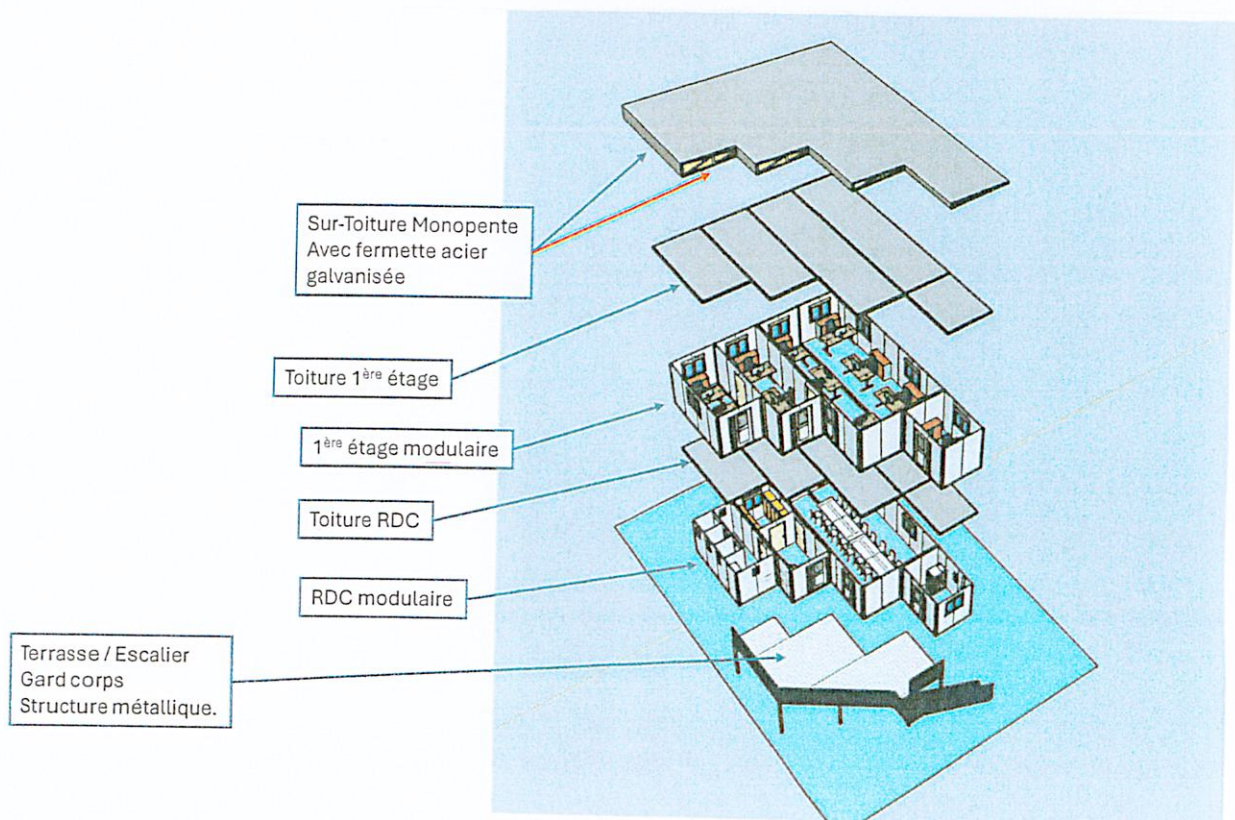
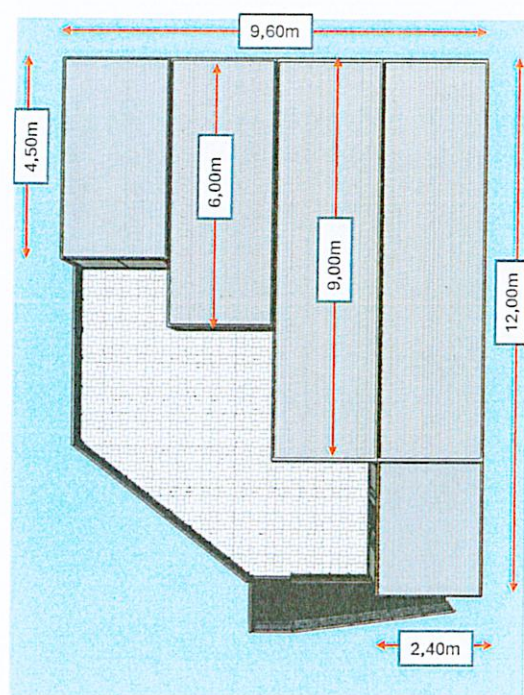
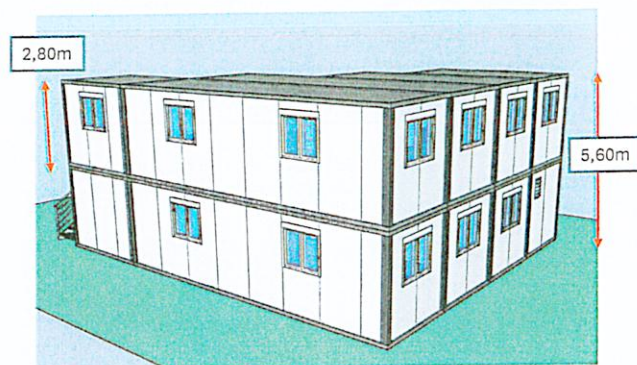


# PROJET BRIGADE NAUTIQUE

## I- IMPLANTATION



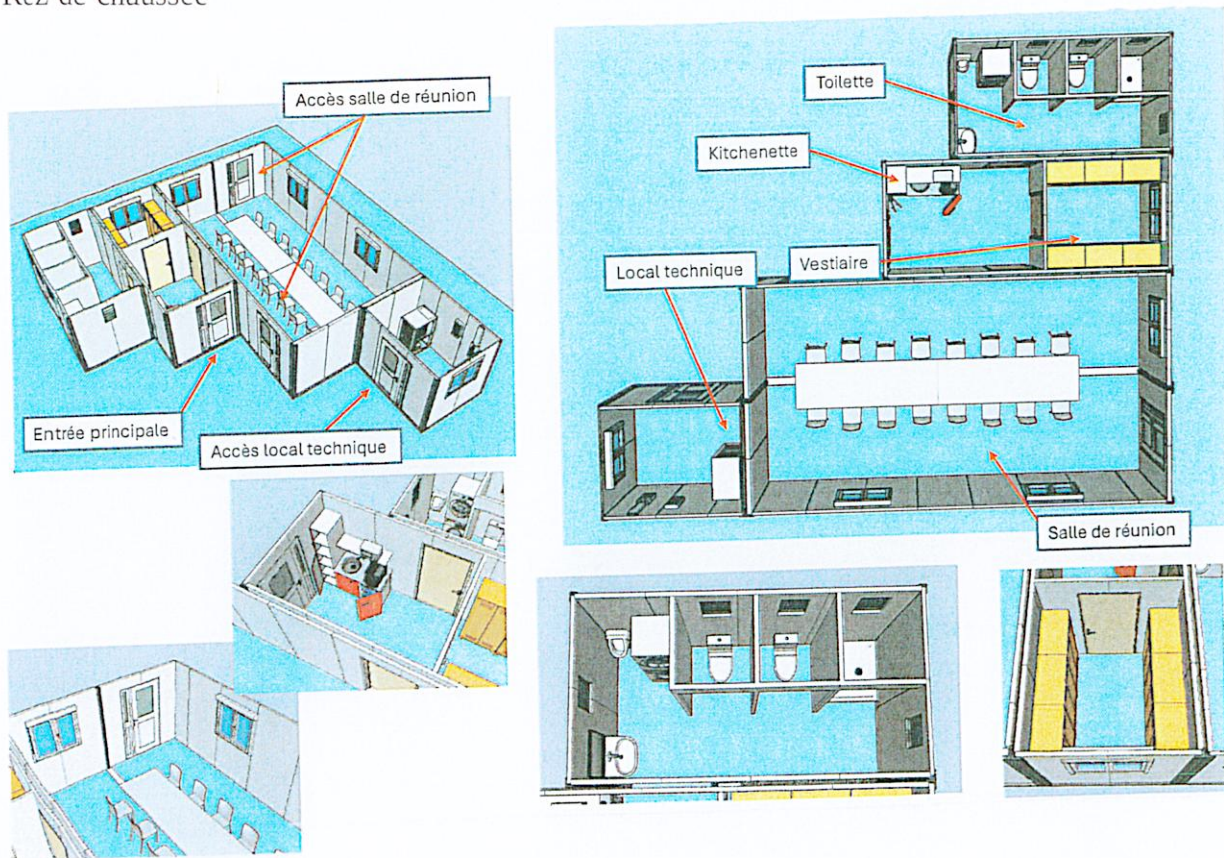
## II- EMPRISE AU SOL



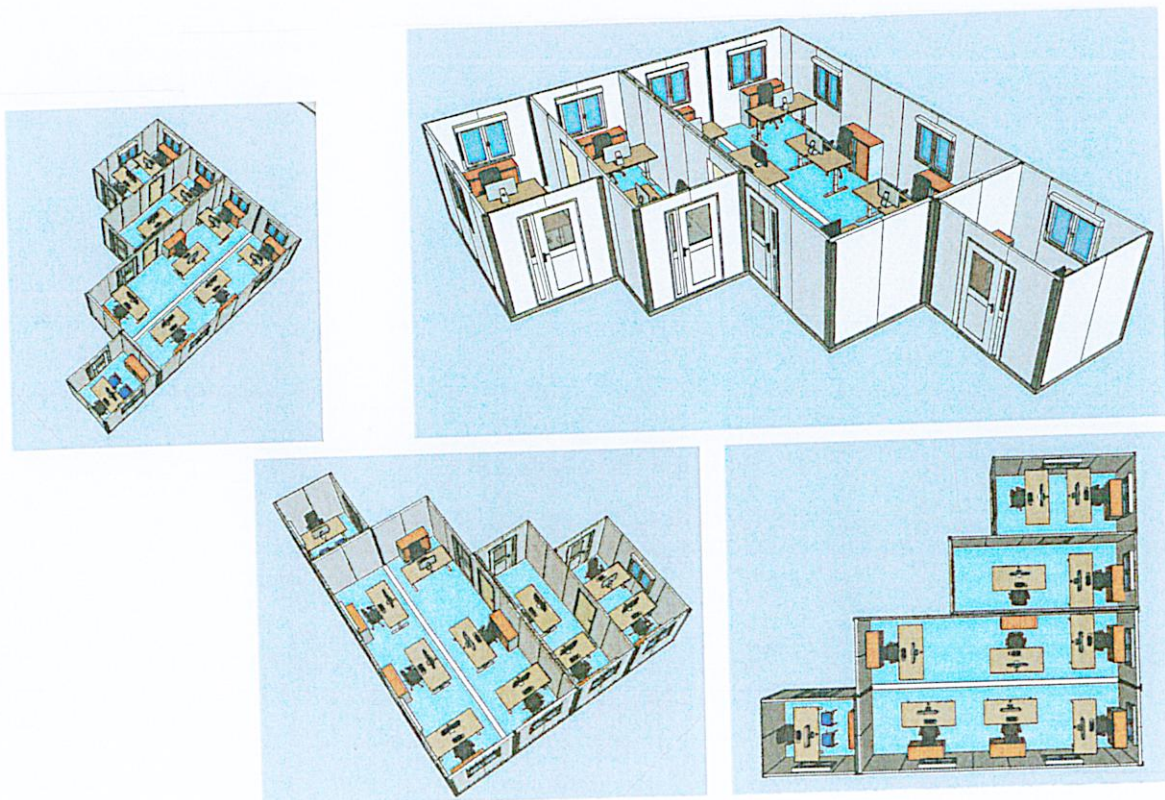


### III- PLANS

#### a) Rez de chaussée

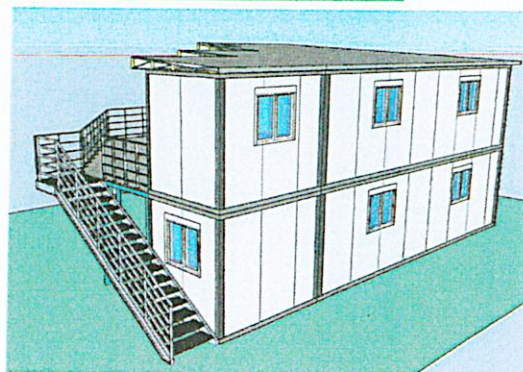
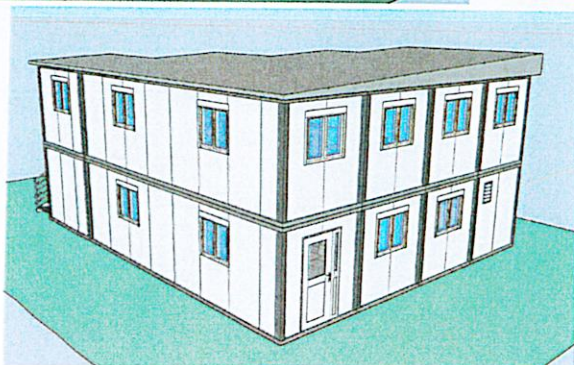
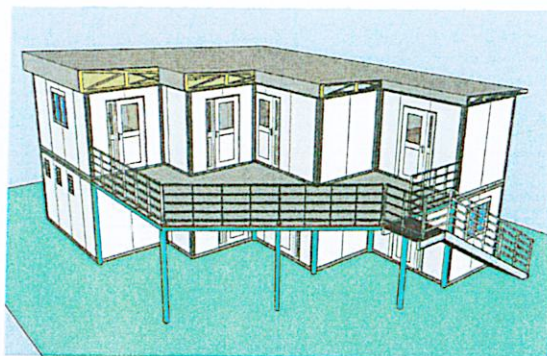
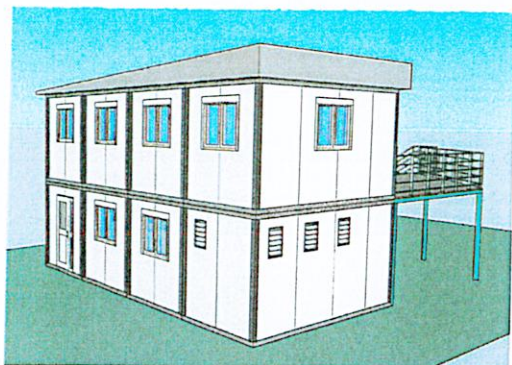


#### b) Étage



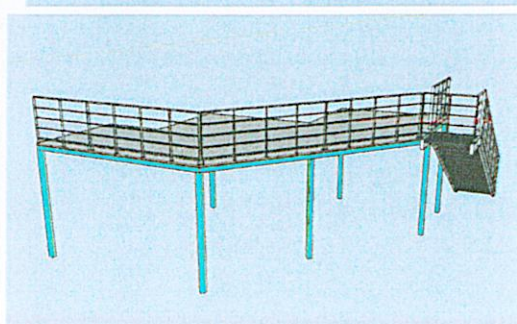
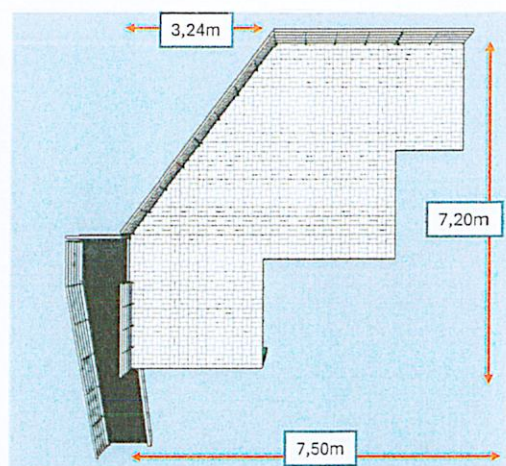
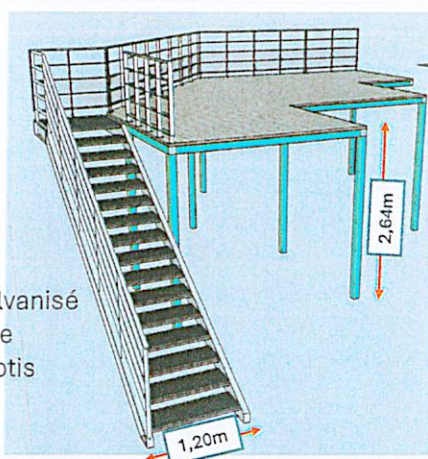


#### IV- PERSPECTIVE



#### V- TERRASSE

L'ensemble de la terrasse en structure métallique galvanisé avec plancher et marche escalier de type caillebotis en acier galvanisé.



## VI. TOITURE

Un débordement de toiture de 0,20m en périphérie  
Prévoir gouttière de récupération d'eau.

